

Flexible couplings

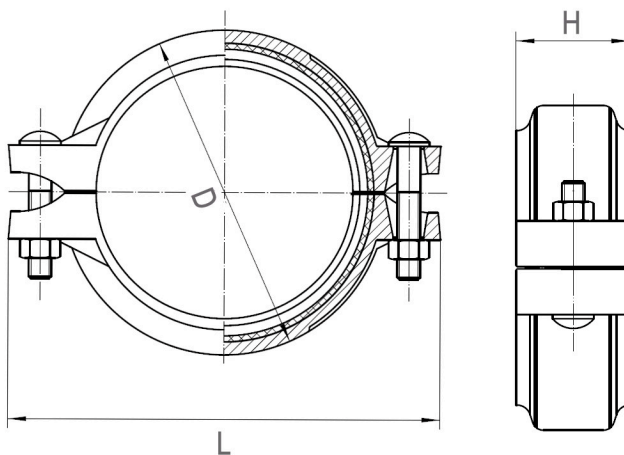


Flexible coupling

The flexible couplings have been designed for use in systems with maximum working pressure between 0 and 20 bars.

This kind of coupling features flexibility and can accommodate misalignment, distortion, thermal stress, vibration, noise and seismic tremors. It can even accommodate an arced or curved piping layout.

The flexible couplings are designed to accommodate axial displacement, rotation and a minimum one degree of angular movement.



Dimensions

Nominal Size		Pipe OD	Flexible coupling dimensions			Bolt	Pressure max.
mm	inches	mm	D	L	H	mm	PSI
50	2"	60,3	83,6	124,0	46,0	M10 x 55	300
65	2 1/2"	73,0	98,0	137,0	46,0	M10 x 55	300
80	3"	88,9	114,0	156,0	46,0	M10 x 55	300
100	4"	114,3	142,0	189,0	50,0	M12 x 65	300
125	5"	141,3	170,0	218,0	50,0	M12 x 65	300
150	6"	168,3	198,0	251,0	50,0	M12 x 65	300