

# PRESSURE GAUGES WITH FILLING LIQUID

Pressure gauges realized for his use in bombs, presses, compressors, turbines, diesel engines, in chemical and petrochemical industry and in facilities or plants with pulsating pressures and mechanical vibrations. They can be used by liquid or gaseous fluids that do not attack the alloy of copper, which do not present a high stickiness and which do not crystallize. They fulfill norm CE.

## **Constructive and functional characteristics:**

**Accuracy:** Type 1,6 according to EN 837-1.

**Ranges:** -1..0 a 0..600 bar or any other equivalent unit of pressure or vacuum, standard ranges according to DIN 16 128.

**Ambient temperature:** -20...+65 ° C.

**Process fluid temperature:** Max. +65° C.

### **Temperature error:**

Additional error when the temperature of the pressure element deviates from 20°C. +/-0,3 % every 10 °C of change.

### **Working pressure:**

Steady: Max 75% of E.S.

Fluctuating: 2/3 of E.S.

**Temporary overpressure:** +25% ≤ 100 bar scales.

+15% for > 100 bar scales.

**Protection degree:** IP 65 as per IEC 529.

**Process connection racord:** In brass.

**Elastic element:** Phosphoric bronze. In "C" for ≤ 40 bar scales. In spiral for >40 bar scales.

**Case:** In AISI 304.

**Bezel:** Roll formed, in AISI 304.

**Window:** clear plastic 4 mm thickness.

**Movement:** In brass.

**Pointer:** Painted black aluminium.

**Window gasket, filling plug and blow out went:** in EPDM.

**Liquid:** Glycerine 98%.



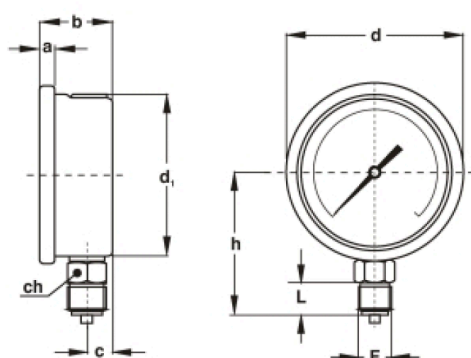
### **Optional extras:**

Tin-silver welding.

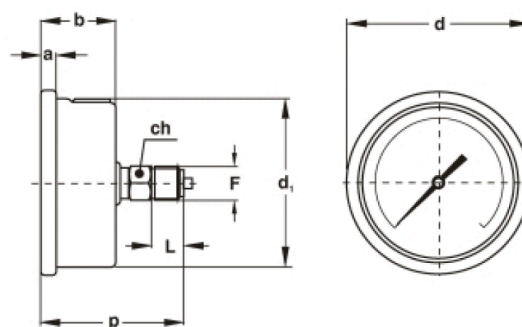
Glass window.

Special connections.

# PRESSURE GAUGES WITH FILLING LIQUID



## DIMENSIONS (mm)



**TYPE 1**  
Local assembly  
Lower pressure entry

**TYPE 2**  
Local assembly  
Back pressure entry

DN	Tipo	a	b	c	ch	d	d'	F	h	L	p
63	1	6,2	29	10	14	68	61,5	1/4" BSP	55,5	13	
63	2	6,2	29		14	68	61,5	1/4" BSP		13	54
50	1	6,2	29	10	14	57,5	51,5	1/4" BSP	50,5	13	
50	2	6,2	29		14	57,5	51,5	1/4" BSP		13	54
40	1	5,6	26,5	8	11	47	41	1/8" BSP	39,5	10	
40	2	5,6	26,5		11	47	41	1/8" BSP		10	55